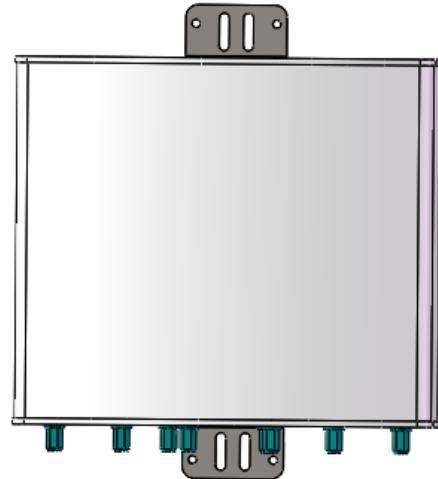


8-Port MIMO Directional Antenna

Model No.: BDA0-60X8D08B

- Excellent PIM, -150dBc guaranteed
- Wideband frequency range: 698-960/1710-2700MHz
- MIMO Application, 2*2 MIMO for low band & 6*6 MIMO for high band
- IP65 for both indoor and outdoor

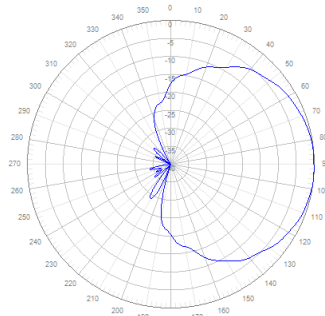


Product Specifications:

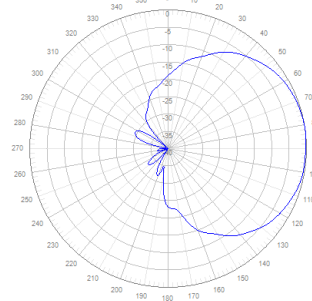
Electrical				
Frequency Band, MHz	698–800	801–960	1710–2180	2181-2700
Horizontal Beamwidth, degrees	65 ± 7°	55 ± 5°	68 ± 8°	55 ± 8°
Vertical Beamwidth, degrees	65 ± 7°	66 ± 6°	38 ± 6°	28 ± 5°
Gain, dBi	8 ± 1	8.5 ± 1	10 ± 1	12 ± 1
Boresight CPR, dB	≥15			
F/B Ratio, 180° ± 30°, dB	≥22			
In-band Isolation, Port to Port, dB	≥25			
Inter-band Iso., Port to Port, dB	≥25			
VSWR/Return Loss, dB	1.5 / 14			
Maximum Input Power, watts	300			
3 rd PIM, @ 2*20W, dBc	-150			
Impedance	50 ohm			
Polarization	±45°			

Mechanical	
Mounting Type	Mounting Bracket
Number of Ports, all types	698-960MHz: 2 * 7-16 DIN-Female 1710-2700MHz: 6 * 7-16 DIN-Female
Radome Color	Gray
Radome Material	UPVC
Net size, L * W * D	362 * 412 * 136mm
Maximum Wind-loading	216 km/h
Net Weight	5.2 Kg
Operating Temperature	-40 °C to +70 °C (-40 °F to +158 °F)
Relative Humidity	0 to 95%

Patterns

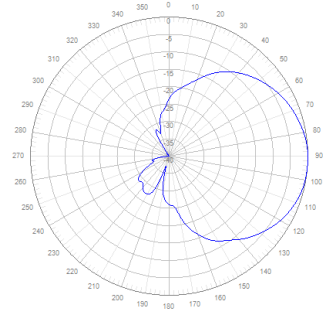


700MHz

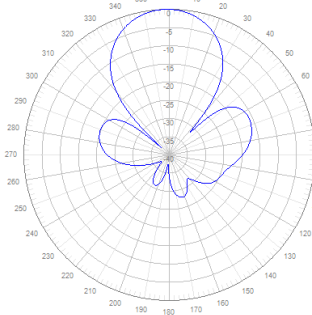


2100MHz

Azimuth



700MHz



2100MHz

Elevation

Engineering Drawings

