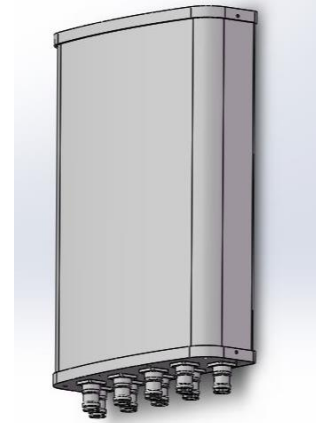


Outdoor Directional Panel Antenna

Model No.: ODA1-090X15EI

- Frequency range: 3300-4200MHz
- Consistent patterns over frequency
- 8 x 8 MIMO application
- Connector options: 4.3-10 and N type
- IP65 for both indoor and outdoor application

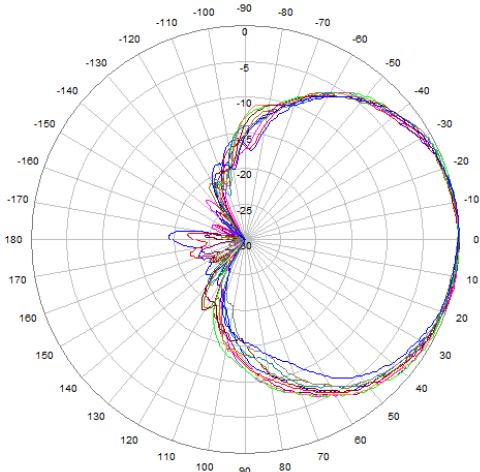


Product Specifications:

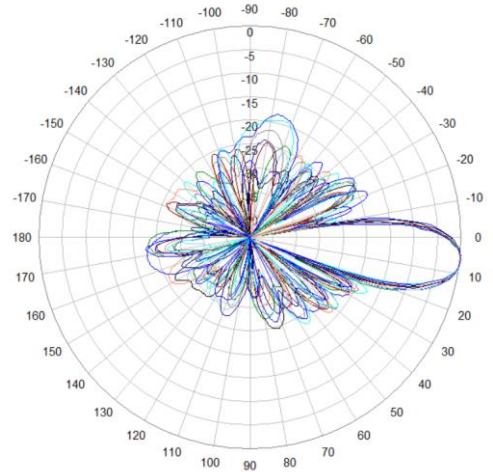
Electrical				
Frequency band, MHz	3300-3400	3400 - 3600	3600-3800	3800-4200
Horizontal beamwidth, degrees	99	90	90	85
Vertical beamwidth, degrees	7.5	7	6.5	6
Optional FET, degrees	0, 3, 6 ,9			
Gain, dBi	14.5	15	15	15.5
Vertical sidelobe, dB	16	16	16	15
CPR @ boresight, dB	17	17	17	16
Isolation Cross-pol, port-to-port, dB	23	25	25	25
Isolation Co-pol port-to-port, dB	20			
F/B ratio at 180° ± 30°, dB	25			
VSWR/Return Loss, dB	1.5 / 14			
Impedance	50 ohm			
Polarization	± 45°			

Mechanical	
Mounting Type	Wall mount / Pole mount
Adjustable range for vertical	80 degrees
Adjustable range for horizontal	80 degrees(wall mount) / 360 degrees (pole mount)
Number of Ports, all types	8
Radome Color	Grey
Radome Material	PVC, UV resistant
Net size, Length*Width*Depth	405 * 280 * 85mm
Maximum Wind-loading	216 kph
IP protection	IP65
Net weight	~ 3.3 Kg
Operating Temperature	-40 °C to +60 °C (-40 °F to +140 °F)
Relative Humidity	0 to 100%

Patterns



Horizontal Beamwidth, 3300-4200MHz



Vertical Beamwidth, 3300-4200MHz