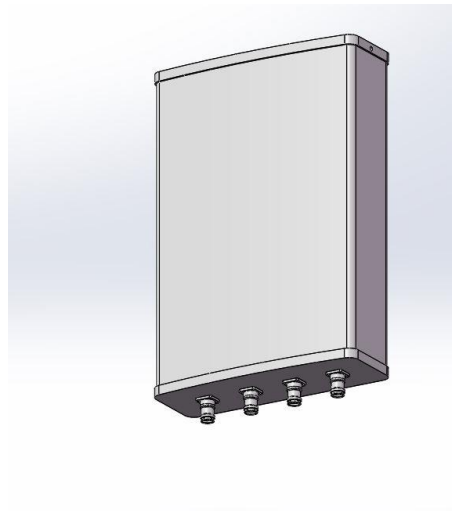


**Model No.: BDA1-030X11DG/EG**

- Excellent PIM, -150dBc @ 1695 - 2700MHz
- Frequency range: 1695-2700, 3400 - 3800 and 4900-5900MHz
- Consistent patterns
- Connector options: 7/16 DIN, 4.3-10 and N type
- IP65 for both indoor and outdoor application

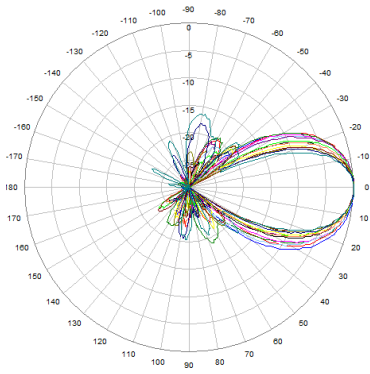


**Product Specifications:**

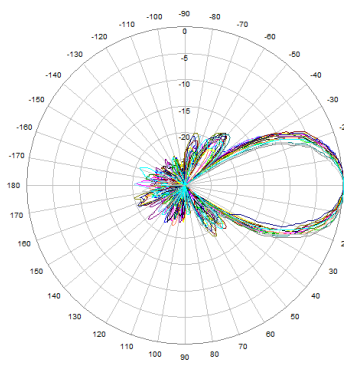
<b>Electrical</b>			
Frequency band, MHz	1695 - 2700	3400 - 3800	4900-5900
Horizontal beamwidth, degrees	30	30	30
Vertical beamwidth, degrees	60	60	60
Gain, dBi	11	10	9
Horizontal sidelobe, dB	15		
PIM 3 <sup>rd</sup> @ 2*20W, dBc	-150	\	\
F/B ratio, dB	20		
Isolation, dB	20		
CPR @ boresight, dB	15		
VSWR/Return Loss, dB	1.5 / 14	1.7 / 11.7	
Impedance	50 ohm		
Polarization	± 45°		

<b>Mechanical</b>	
Mounting Type	Wall mount / Pole mount
Adjustable range for vertical	80 degrees
Adjustable range for horizontal	80 degrees(wall mount) / 360 degrees (pole mount)
Number of Ports, all types	4 Ports for 1695-2700,3400-3800 and 4900-5900MHz
Radome Color	Grey
Radome Material	PVC, UV resistant
Net size, Length*Width*Depth	550 *325 * 115mm
Maximum Wind-loading	216 kph
IP protection	IP65
Net weight	~ 4.3 Kg
Operating Temperature	-40 °C to +60 °C (-40 °F to +140 °F)
Relative Humidity	0 to 100%

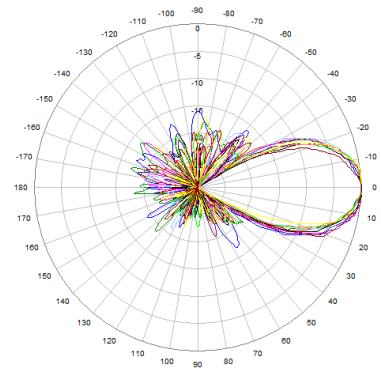
## Patterns



1695-2700MHz

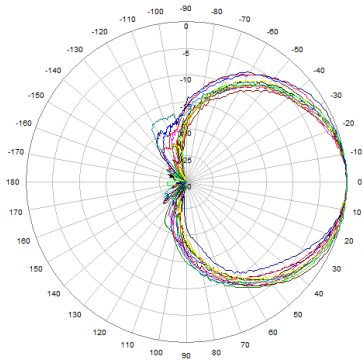


3400-3800MHz

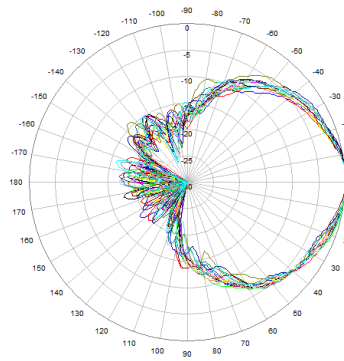


4900-5900MHz

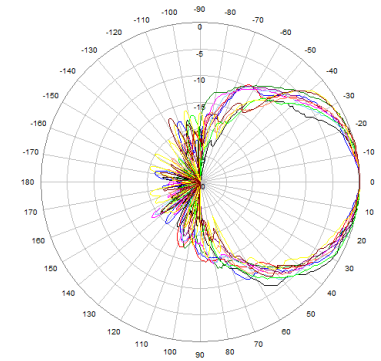
## Horizontal Beamwidth



1695-2700MHz



3400-3800MHz



4900-5900MHz

## Vertical Beamwidth