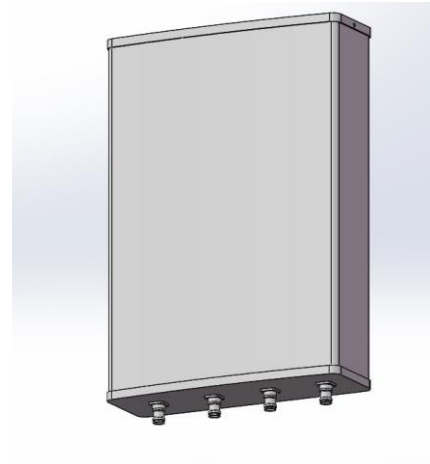


**Model No.: BDA1-030X13DG/EG**

- Excellent PIM, -150dBc @ 1695 - 2700MHz
- Frequency range: 1695-2700, 3400 - 3800 and 4900-5900MHz
- Consistent patterns
- Connector options: 7/16 DIN, 4.3-10 and N type
- IP65 for both indoor and outdoor application

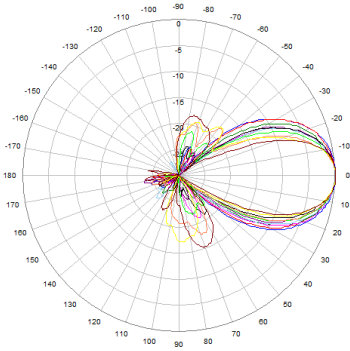


**Product Specifications:**

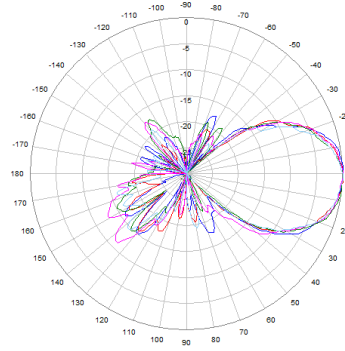
<b>Electrical</b>			
Frequency band, MHz	1695 – 2700	3400 – 3800	4900-5900
Horizontal beamwidth, degrees	30	30	30
Vertical beamwidth, degrees	30	30	30
Gain, dBi	13	12	11
Horizontal sidelobe, dB	15		
Vertical sidelobe, dB	15		
PIM 3 <sup>rd</sup> @ 2*20W, dBc	-150	\	\
F/B ratio, dB	20		
Isolation, dB	25		
CPR @ boresight, dB	18		
VSWR/Return Loss, dB	1.7 / 11.7		
Impedance	50 ohm		
Polarization	± 45°		

<b>Mechanical</b>	
Mounting Type	Wall mount / Pole mount
Adjustable range for vertical	90 degrees
Adjustable range for horizontal	90 degrees(wall mount) / 360 degrees (pole mount)
Number of Ports, all types	4 Ports
Radome Color	Grey
Radome Material	PVC, UV resistant
Net size, Length*Width*Depth	605 * 415 * 140mm
Maximum Wind-loading	216 kph
IP protection	IP65
Net weight	~ 6 Kg
Operating Temperature	-40 °C to +60 °C (-40 °F to +140 °F)
Relative Humidity	0 to 100%

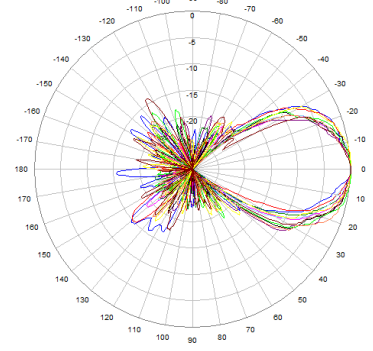
## Patterns



1695-2700MHz

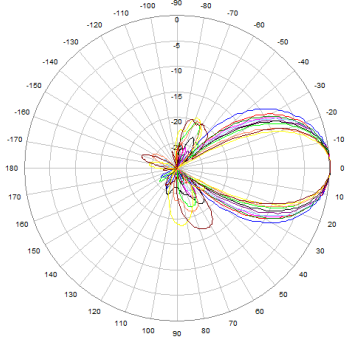


3400-3800MHz

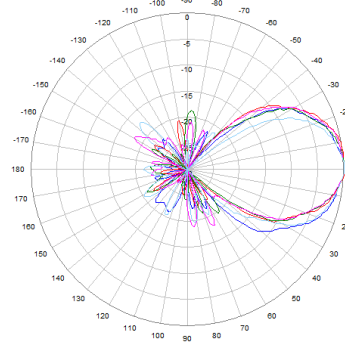


4900-5900MHz

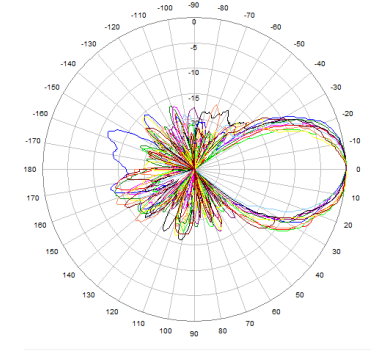
## Horizontal Beamwidth



1695-2700MHz



3400-3800MHz



4900-5900MHz

## Vertical Beamwidth