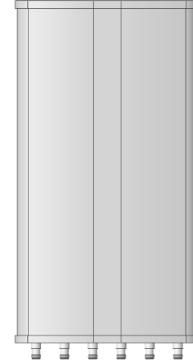


1710-2690MHz Multibeam Base Station Antenna

Model No.: H-BDX-0003-0018-021-D6T- EF/DF

- Frequency range: 1710-2690MHz
- Triple beam application with 6° FET
- Connector options: 4.3-10(f) and 7/16 DIN-F
- IP65 for both indoor and outdoor application



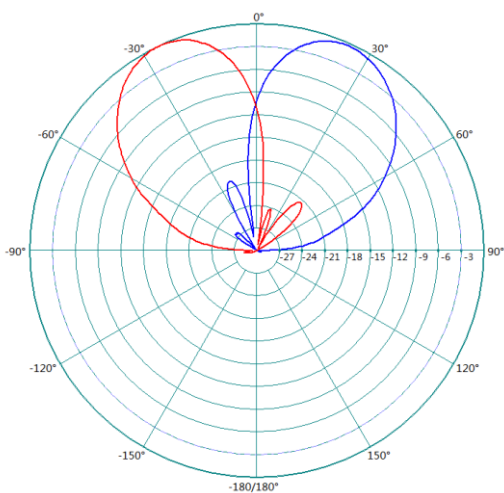
Product Specifications:

Electrical						
Beam1(port1 and port2) / Beam3(port5 and port6)						
Frequency Range, MHz	1710~2170		2171~2300		2301~2690	
	B1	B3	B1	B3	B1	B3
Gain, dBi	17.5	17.5	18.3	18.3	19.0	19.0
Horizontal 3dB Beamwidth(°)	24.0	24.0	21.0	21.0	19.0	19.0
Horizontal Beam pointing(°)	40.0	-40.0	35.0	-35.0	30.0	-30.0
Vertical 3dB Beamwidth(°)	15.3	15.3	13.2	13.2	11.8	11.8
Beam3 (port3,port4)						
Frequency Range, MHz	1710~2170		2170~2300		2300~2690	
Gain, dBi	18,5		19.3		20.0	
Horizontal 3dB Beamwidth(°)	23.0		20.0		18.0	
Horizontal Beam pointing(°)	0		0		0	
Vertical 3dB Beamwidth(°)	14		12		10.5	
All beams						
Frequency Range, MHz	1710~2170		2171~2300		2301~2690	
Polarization	±45°					
VSWR	<1.5					
ISO between polarizations, dB	25					
Upper Sidelobe Suppression, dB	16					
Front to Back Ratio@180±30°, dB	25					
Electrical Downtilt(°)	6°, Fixed					
PIM 3 rd @ 2*20W, dBc	-150					
Power Rating(W)	250					
Impedance(ohm)	50					
Lightning protection	DC Ground					

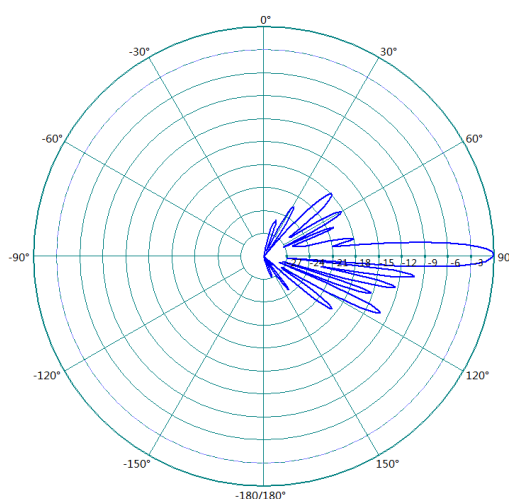
All specifications are subject to change without any notice. Please contact us for the latest information.

Mechanical	
Connector(s)	4 × 4.3-10 Female
Antenna Dimensions, H×W×D, mm	725 × 379 × 120
Packing Dimensions, H×W×D, mm	890 × 480 × 260
Net Weight, kg	15
Packaging Weight, kg	25
Diameter of Installation Pole, mm	Φ50~110
Wind Load @ 150 Km/h Front, N	358
Wind Load @ 150 Km/h Side, N	142
Wind Load @ 150 Km/h Rear, N	447
Radome Material	UPVC
Mechanical Downtilt (°)	0~10
Operating Temperature Range(°C)	-40~+70
Ingress protection	IP65
RoHS	Compliant

Patterns



Horizontal



Vertical